



Bobcat[®]

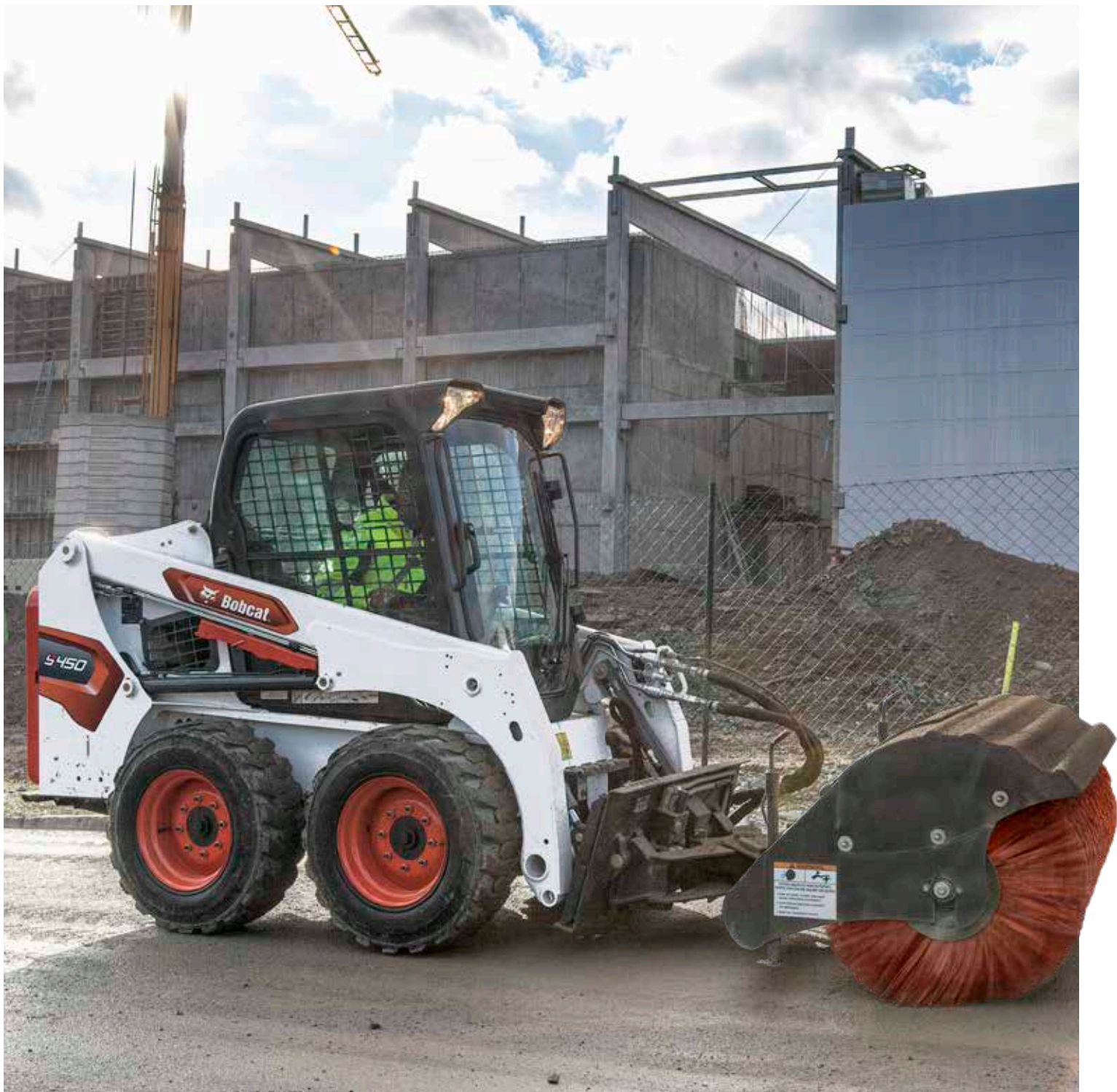
One Tough Animal.

SKID STEER LOADERS

S450 | S510 | S530 | S550
S570 | S590 | S630 | S650

K-Series | **M-Series** | R-Series

🌐 MEA, CIS



INTRODUCTION

ONE TOUGH ANIMAL



▶ ABOUT BOBCAT

In 1958, Melroe Manufacturing Company introduced a compact front-end loader that evolved quickly into the M400, the world's first true skid steer loader. The company soon adopted what became the world-famous 'Bobcat' brand – and its success paved the way for the global compact equipment industry we know today.

▶ INNOVATION CENTER IN DOBŘÍŠ

New technologies and machines are rigorously tested to take on the toughest jobs.



▶ BOBCAT TODAY

With over 60 years of experience in manufacturing and continuously improving the world's most popular loaders, we've shipped over 1 million machines to the market. Our loaders are synonymous with high performance, reliability and unmatched comfort.



▶ OUR MISSION

We empower operators to accomplish more, while working in the toughest conditions and tightest situations. When our customers have the will, we provide the way.

MADE TO KEEP YOU IN THE FIELD

▶ BOBCAT EQUIPMENT EARNS IT'S KEEP

Bobcat equipment is tough – and this attribute leads all of the others. Front-to-back uptime protection features, panoramic serviceability and simple maintenance ensure that M-Series loaders stay reliable year after year.



Optional pressurized enclosed cab with heating

ROPS/FOPS protection

Optional Selectable Joystick Controls

High-flow option

Hydraulic power Bob-Tach™ option

Auto ride control

Vertical and radial lift arm option
P.7

Durable tailgate

Proven design of the maintenance-free chaincase

Durable keel-shaped undercarriage

Tire selection to fit all job sites

Over 100 attachments for every kind of job
P.16



▶ SUPERIOR POWER IN A COMPACT PACKAGE

A best-in-class mix of performance and agility for maximum productivity.
P.7



▶ EASY MAINTENANCE

Bobcat knows your job is tough and makes sure servicing your loader isn't.
P.10



▶ MAXIMUM UPTIME

A reliable, time-proven design and unmatched durability thanks to 60 years of innovation.
P.10



▶ POWER AND EFFICIENCY

Easy operation thanks to high torque engines with smooth controls even at full power.

PERFORMANCE



▶ HIGH PERFORMANCE, SMALL SIZE
M-Series loaders feature outstanding performance while remaining agile and easy to transport. It's not the size, after all. It's how many ways you can use it. With a lifting capacity up to 1282 kg, you are well equipped for the most demanding jobs.

▶ HIGH-FLOW FOR ADVANCED ATTACHMENTS
Every Bobcat machine is designed as an attachment carrier. High-flow takes that versatility even further, enabling operators to replace several pieces of dedicated equipment with just one machine.



LIFT PATTERNS TO MATCH YOUR NEEDS

▶ RADIAL
A cost-effective option, ideal for ground-level attachments with basic lift capability for everyday jobs.



▶ VERTICAL
Higher lift, increased forward reach at maximum height, and greater lift capacity for demanding applications and environments.



STEP INSIDE



► PRESSURIZED CAB

With a pressurized cab as an option, dust and dirt are kept out and away from the operator. With storage space and a 12V charger, this easy-to-clean cab is built to make tough jobs comfortable.



► IN ALL WEATHER CONDITIONS



Stay comfortable and focused on the job all year round with direct cab temperature control.

► DELUXE DASHBOARD

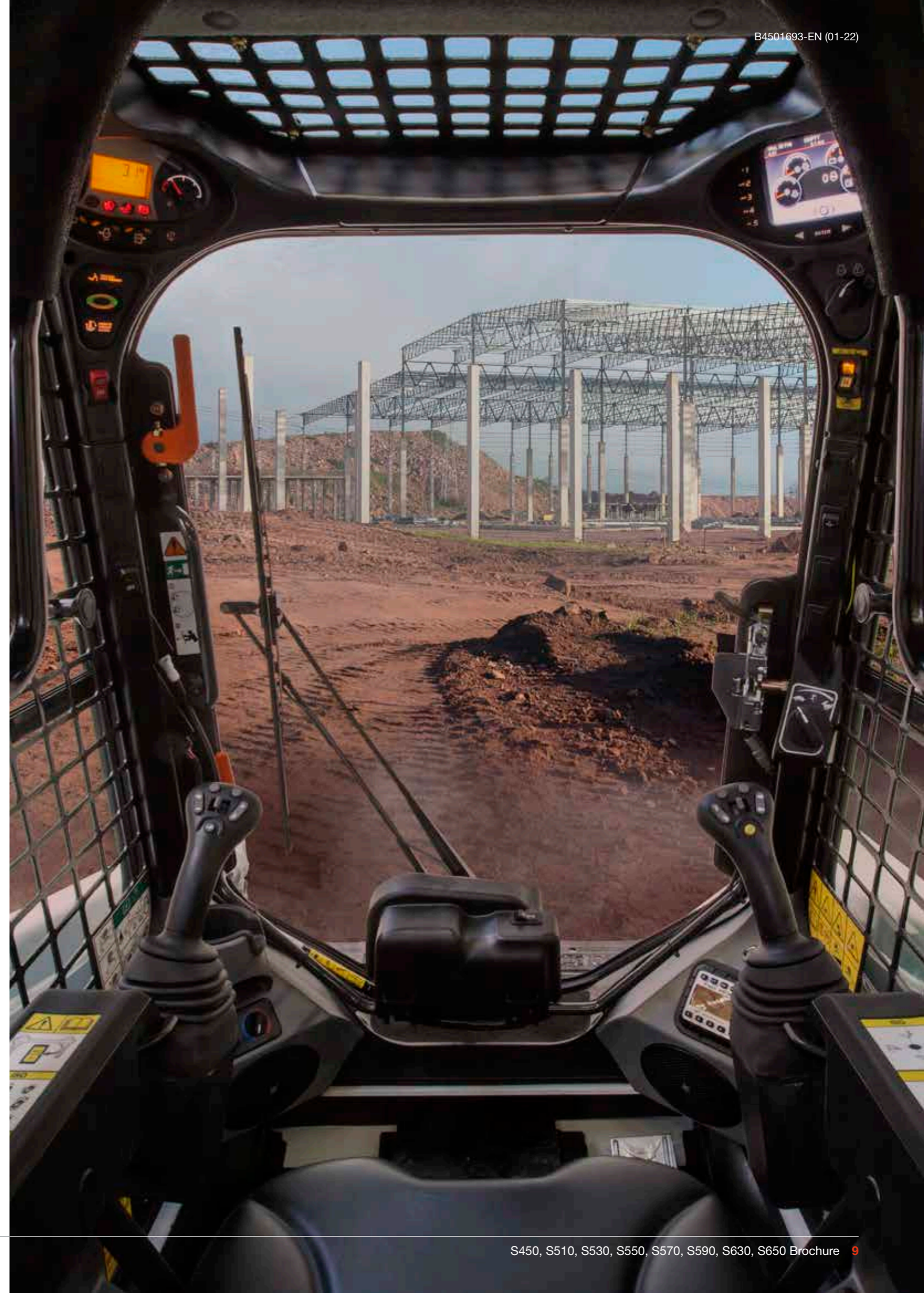


Intuitive control panel and keyless ignition for increased convenience and security.

► PERFECT SEAT



Stay comfortable all day with ergonomic, easily adjustable seats with suspension options.



BUILT TO LAST

▶ IMPROVED UPTIME

Bobcat loaders rely on a range of features that help minimize maintenance and protect your machine: self-diagnostics, machine shutdown protection, battery run-down protection, cold weather protection, and many others. What's more, M-Series skid steer loaders feature the industry's only maintenance-free chain case, which further reduces maintenance and gives you added peace of mind.

▶ LEGACY OF INNOVATION

Operators stake their reputations on the durability and reliability of our equipment. Bobcat machines have proven themselves to stand the test of time on job sites all over the world. But Bobcat Company never stops innovating. Each generation is stronger, faster and more durable than the last.



THERE'S NO TIME FOR DOWNTIME. STAND UP TO THE HARSHTEST CONDITIONS. DAY AFTER DAY.

▶ STANDARD WARRANTY

Bobcat Company develops every machine to the highest standards of quality and durability. That's why our standard warranty provides 24 months or 2000 operating hours (whichever occurs first) of coverage.



▶ PROTECTION PLUS EXTENDED WARRANTY

Enjoy peace of mind with a Protection Plus® extended warranty, which provides the same level of protection as the standard warranty for up to 5 years. Choose the level of protection you need: powertrain, powertrain + hydraulics, or full coverage.



▶ BOBCARE PLANNED MAINTENANCE

A long-running, reliable machine starts with proper planned maintenance. Which helps protect against repair costs and unplanned failures when you're counting on your machine to work.

- Prevent major repairs and complete failures.
- Reduce downtime and increase your productivity and profitability.

RIGHT TOOL FOR THE JOB



► **BOBCAT EQUIPMENT ADAPTS TO YOUR JOB**
 From urban areas to beaches and from material handling to forestry, the lineup of Bobcat machines allows you to select the most suitable equipment for the unique jobs you do. Every machine is packed with features that give operators the power to do more, and do it faster.

CHOOSE YOUR ANIMAL



► **S450**

Power @ RPM (ISO 14396)	36.4 kW / 48.8 hp @ 2800
Tipping load (ISO 14397-1)	1215 kg
Operating weight	2365 kg
Lift arm path	radial



► **S510**

Power @ RPM (ISO 14396)	34.4 kW / 46.1 hp @ 2700
Tipping load (ISO 14397-1)	1619 kg
Operating weight	2686 kg
Lift arm path	radial



► **S530**

Power @ RPM (ISO 14396)	34.4 kW / 46.1 hp @ 2700
Tipping load (ISO 14397-1)	1737 kg
Operating weight	2815 kg
Lift arm path	vertical



► **S550**

Power @ RPM (ISO 14396)	45.5 kW / 61.0 hp @ 2700
Tipping load (ISO 14397-1)	1788 kg
Operating weight	2841 kg
Lift arm path	radial



► **S570**

Power @ RPM (ISO 14396)	45.5 kW / 61.0 hp @ 2700
Tipping load (ISO 14397-1)	1888 kg
Operating weight	2900 kg
Lift arm path	vertical



► **S590**

Power @ RPM (ISO 14396)	49.2 kW / 66.0 hp @ 2700
Tipping load (ISO 14397-1)	1995 kg
Operating weight	3054 kg
Lift arm path	vertical



► **S630**

Power @ RPM (ISO 14396)	55.4 kW / 74.3 hp @ 2400
Tipping load (ISO 14397-1)	2079 kg
Operating weight	3496 kg
Lift arm path	radial



► **S650**

Power @ RPM (ISO 14396)	55.4 kW / 74.3 hp @ 2400
Tipping load (ISO 14397-1)	2564 kg
Operating weight	3777 kg
Lift arm path	vertical

STANDARD EQUIPMENT & OPTIONS

	S450	S510	S530	S550	S570	S590	S630	S650
PERFORMANCE								
2 Speed	• (SJC)	•	•	•	•	•	•	•
Attachment control device	•	•	•	•	•	•	•	•
Automatic reversing fan	•	•	•	•	•	•	•	•
Automatic ride control	•	•	•	•	•	•	•	•
Auxiliary hydraulics: variable flow/maximum flow	✓	✓	✓	✓	✓	✓	✓	✓
Bob-Tach™ frame	✓	✓	✓	✓	✓	✓	✓	✓
Bobcat Interlock Control System (BICS)	✓	✓	✓	✓	✓	✓	✓	✓
Electrically activated proportional front auxiliary hydraulics	✓	✓	✓	✓	✓	✓	✓	✓
Engine/hydraulics system shutdown	✓	✓	✓	✓	✓	✓	✓	✓
High-Flow hydraulics		•	•	•	•	•	•	•
Hydraulic bucket positioning	•	•	•	•	•	•	•	•
Lift arm support	✓	✓	✓	✓	✓	✓	✓	✓
Power Bob-Tach™	•	•	•	•	•	•	•	•
Spark arrestor muffler	✓	✓	✓	✓	✓	✓	✓	✓
TIRES								
10 × 16.5, 10-ply, heavy duty tires	✓	✓	✓	✓	✓	✓	-	-
10 × 16.5, 10-ply, heavy duty tires, offset rims		•	•	•	•	•	-	-
10 × 16.5, 10-ply, severe duty tires	•	•	•	•	•	•	-	-
10 × 16.5, 10-ply, versatile duty tires	•	•	•	•	•	•	-	-
10 × 16.5, industrial flex tires	•	•	•	•	•	•	-	-
10 × 16.5, solid flex tires	•	•	•	•	•	•	-	-
31 × 12-16.5, 10-ply, superflotation tires	-	•	•	•	•	•	-	-
12 × 16.5, 12-ply, versatile duty tires	-	-	-	-	-	-	•	•
12 × 16.5, 12-ply, heavy duty tires	-	-	-	-	-	-	✓	✓
12 × 16.5, 12-ply, heavy duty tires, offset rims	-	-	-	-	-	-	•	•
12 × 16.5, 12-ply, severe duty tires	-	-	-	-	-	-	•	•
12 × 16.5, industrial flex tires	-	-	-	-	-	-	•	•
12 × 16.5, solid flex tires	-	-	-	-	-	-	•	•
33 × 15.5-16.5, 12-ply, superflotation tires	-	-	-	-	-	-	•	•
CAB								
Deluxe instrument panel	•	•	•	•	•	•	•	•
Deluxe operator cab*	•	•	•	•	•	•	•	•
Deluxe pressurized cab* with heating	•	•	•	•	•	•	•	•
Deluxe pressurized cab* with HVAC	•	-	-	•	•	•	•	•
Fire extinguisher		•	•	•	•	•	•	•
Radio	•	•	•	•	•	•	•	•
Seat bar	✓	✓	✓	✓	✓	✓	✓	✓
Seat belt	✓	✓	✓	✓	✓	✓	✓	✓
Selectable Joystick Controls (SJC)	• (2 Speed)	•	•	•	•	•	•	•
Sound option	•	•	•	•	•	•	•	•
Standard cab*	✓	✓	✓	✓	✓	✓	✓	✓
Standard seat	✓	✓	✓	✓	✓	✓	✓	✓
Suspension cloth seat	•	•	•	•	•	•	•	•
Suspension vinyl seat	•	•	•	•	•	•	•	•

	S450	S510	S530	S550	S570	S590	S630	S650
LIGHT & BEACON								
Beacon	•	•	•	•	•	•	•	•
Operating lights, front and rear	✓	✓	✓	✓	✓	✓	✓	✓
Strobe	•	•	•	•	•	•	•	•
MISCELLANEOUS								
Automatically activated glow plugs	✓	✓	✓	✓	✓	✓	✓	✓
Back-up alarm	•	•	•	•	•	•	•	•
Custom paint color (min. order of 5 units)	•	•	•	•	•	•	•	•
Operating manual	✓	✓	✓	✓	✓	✓	✓	✓
Parking brake	✓	✓	✓	✓	✓	✓	✓	✓
Road option	•	•	•	•	•	•	•	•
Tailgate lock	✓	•	•	✓	✓	✓	•	•
Warranty: 24 months or 2000 hours (whichever occurs first)	✓	✓	✓	✓	✓	✓	✓	✓

*Roll Over Protective Structure (ROPS) – meets requirements of SAE-J1040 and ISO 3471; Falling Object Protective Structure (FOPS) – meets requirements of SAE-J1043 and ISO 3449, Level I

• = option ✓ = standard - = not available or not compatible

PERSONALIZE YOUR MACHINE

Sometimes, we all want to add a specific functionality or a personal touch to the machine. Choose from a list of comprehensive options and customize your loader to your heart's content!



Cloth suspension seat

Deluxe operator cab with HVAC

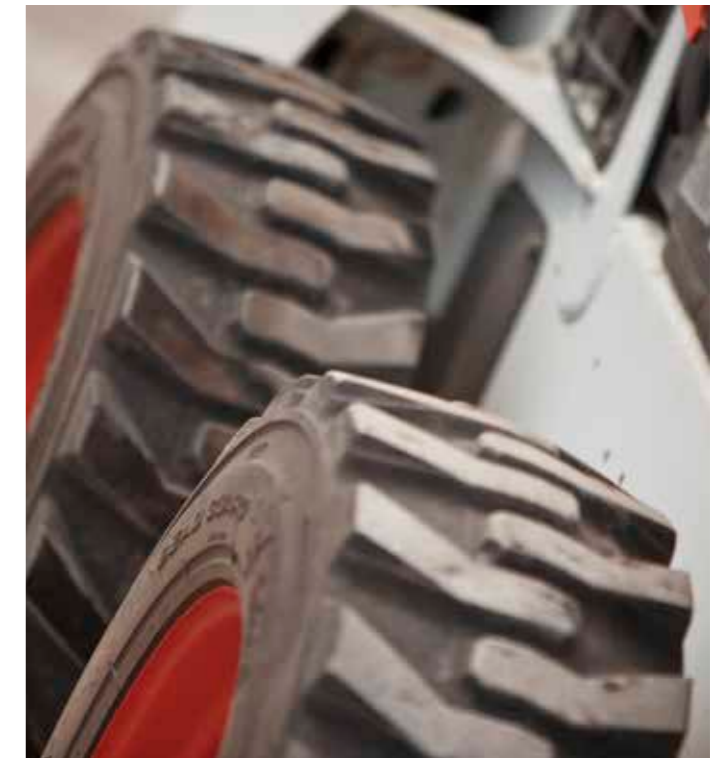
Deluxe instrument panel



Heavy duty tires

High-flow hydraulics

Industrial flex tires



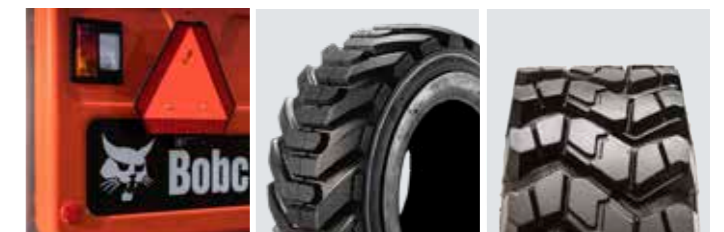
Heavy-duty tires



Selectable Joystick Controls

Severe duty tires

Solid Flex tyres



Road option

Superflotation tires

Versatile duty tires

MULTI-TOOL CARRIER

BOBCAT ATTACHMENTS

Get more versatility and efficiency with Bobcat® attachments.

- The largest choice of attachments in the industry.
- Match performance to your Bobcat machine.
- Work harder with stronger components and construction.
- Rest easy with the 12-month warranty on every genuine Bobcat attachment.

Actual attachment compatibility may vary based on different machine configurations. Contact your dealer for actual attachment compatibility.



Angle brooms



Box blades



Breakers



Brush saws



Combination buckets



Concrete mixers



Drop hammers



Grapples, industrial



Landplanes



Augers



Landscape Rakes



Laser graders



Pallet forks, hydraulic



Root grapples



Backhoes



Tillers



Snow blades



Tree transplanters



Stump grinders



Scrapers

MULTI-TOOL CARRIER

TOP SELECTION OF ATTACHMENTS					
	S450	S510	S530	S550 S570 S590	S630 S650
Angle brooms	•	•	•	•	•
Augers	•	•	•	•	•
Backhoes	•	•	•	•	•
Bale forks	•	•	•	•	•
Box blades		•	•	•	•
Breakers	•	•	•	•	•
Brush saws	•	•	•	•	•
Brushcat™ rotary cutters	•	•	•	•	•
Combination buckets	•	•	•	•	•
Concrete mixers	•	•	•	•	•
Concrete pumps				•	
Construction / industrial buckets	•	•	•	•	•
Diggers	•	•	•	•	•
Dozer blades	•	•	•	•	•
Drop hammers		•	•	•	•
Dumping hoppers	•	•	•	•	•
Fertilizer and grain buckets	•	•	•	•	•
Flail cutters	•	•	•	•	•
Graders	•	•	•	•	•
Industrial grapples	•	•	•	•	•
Landplanes	•	•	•	•	•
Landscape rakes	•	•	•	•	•
Laser equipment	•	•	•	•	•
Low profile buckets	•	•	•	•	•
Mixing buckets		•	•	•	•
Mowers	•	•	•	•	•
Pallet forks	•	•	•	•	•
Planers			•	•	•
Root grapples	•	•	•	•	•
Scarifiers	•	•	•	•	•
Scrapers	•	•	•	•	•
Skeleton buckets	•	•	•	•	•
Snow & light material buckets	•	•	•	•	•
Snow pushers	•	•	•	•	•
Snow V-blades	•	•	•	•	•
Soil conditioners	•	•	•	•	•
Spreaders	•	•	•	•	•
Stump grinders		•	•	•	•
Sweepers	•	•	•	•	•
Tillers	•	•	•	•	•
Tree transplanters		•	•	•	•
Trench compactors		•	•	•	•
Trenchers			•	•	•
Utility forks	•	•	•	•	•
Wheel Saws			•	•	•
Whisker brooms	•	•	•	•	•
Wood chippers	•	•	•	•	•

SPECIFICATIONS

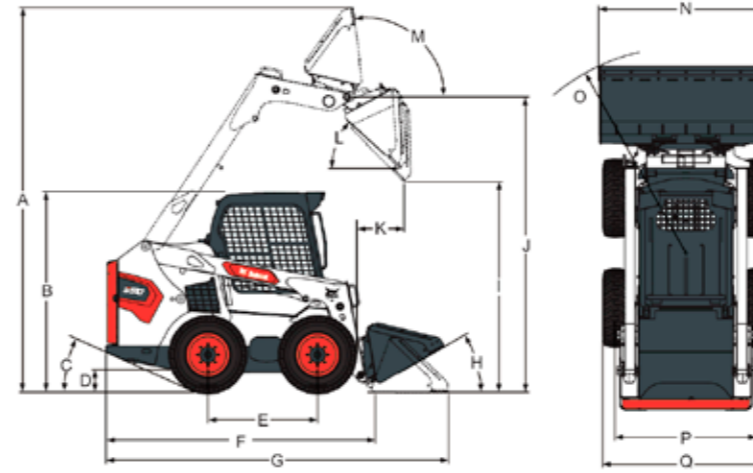
SPECIFICATIONS								
	S450	S510	S530	S550	S570	S590	S630	S660
MACHINE RATING								
Tipping load (ISO 14397-1)	1215 kg	1619 kg	1737 kg	1788 kg	1888 kg	1995 kg	2079 kg	2564 kg
Rated operating capacity (ISO 14397-1)	608 kg	810 kg	869 kg	894 kg	944 kg	998 kg	1040 kg	1282 kg
Pump capacity std flow (at pump RPM)	64 L/min			64.70 L/min			87.10 L/min	
Pump capacity high flow (at pump RPM)	-			101.10 L/min			115.50 L/min	
System relief at quick couplers	22.4-23.1 MPa				23.8-24.5 MPa			
Travel speed	11.4 km/h			11.8 km/h			11.4 km/h	
Travel speed (high - option)	-			17.3 km/h			19.8 km/h	
Lift arm path	radial		vertical	radial		vertical	radial	vertical
DIMENSIONS								
Length with standard bucket	3172 mm			3378 mm			3474 mm	
Width over standard bucket	1575 mm			1727 mm			1880 mm	
Height with operator cab	1976 mm	1972 mm	1970 mm				2065 mm	
Height to bucket hinge pin	2781 mm	2908 mm	3032 mm	2908 mm	3023 mm	3073 mm	3149 mm	
Wheelbase	900 mm			1082 mm			1150 mm	
ENGINE								
Make / Model	Kubota / V2203-M-DI-E2B-BC-3		Kubota / V2403-MDI-E3		Kubota / V2607-DI-TE3B-BC-I		Kubota / V3307-DI-TE3	
Fuel	Diesel							
Cooling	Liquid							
Power @ RPM (ISO 14396)	35.9 kW @ 2800	34.4 kW @ 2700	45.5 kW @ 2700		42.2 kW @ 2700	55.4 kW @ 2400		
Torque @ RPM (SAE J1995 Gross)	149.8 Nm @ 1700	158.6 Nm @ 1600	201 Nm @ 1425		218 Nm @ 1425	264 Nm @ 1600		
Number of cylinders	4							
Displacement	2196 cm ³	2433 cm ³	2600 cm ³				3331 cm ³	
Fuel tank capacity	54.5 L			93.7 L			103.3 L	
WEIGHTS								
Operating weight**	2365 kg	2686 kg	2815 kg	2841 kg	2900 kg	3054 kg	3496 kg	3777 kg
Shipping weight	2052 kg	2343 kg	2476 kg	2503 kg	2560 kg	2710 kg	3244 kg	3540 kg
ENVIRONMENTAL								
Raise lift arms	-	-					85 dB(A)	
Lower lift arms	-	-					101 dB(A)	
Bucket rollback	-	-					0.64 ms ⁻²	0.90 ms ⁻²
Bucket dump	-	-					1.58 ms ⁻²	1.40 ms ⁻²
FORCES								
Lift breakout force	1180 daN	1441 daN	1758 daN	1888 daN	1736 daN	2019 daN	1779 daN	2135 daN
Tilt breakout force	1200 daN	1456 daN	1715 daN	1814 daN	1670 daN	1937 daN	1935 daN	2268 daN
CYCLE TIMES								
Raise lift arms	3.2 s	3.3 s	3.8 s	3.3 s	3.8 s		3.4 s	3.9 s
Lower lift arms	2.5 s	2.8 s	2.5 s	2.8 s	2.5 s		3.0 s	2.6 s
Bucket rollback	1.4 s				1.7 s			
Bucket dump	1.8 s				2.3 s			

* High range standard on S550 & S590 – optional on other models
 ** Base machine with bucket, operator and full fuel tank

Certain specifications are based on engineering calculations and are not actual measurements. Specifications are provided for comparison purposes only and are subject to change without notice. Specifications for your individual Bobcat equipment will vary based on normal variations in design, manufacturing, operating conditions, and other factors. Pictures of Bobcat units may show other than standard equipment.

SPECIFICATIONS

DIMENSIONS



*Machine width with Heavy-duty offset tires.
 Unit: mm

	S450	S510	S530	S550	S570	S590	S630	S660
A	3558	3787	3901	3787	3901	3901	3950	4026
B	1976	1972	1972	1972	1970.0	1972	2065	2065
C	23°	24°	24°	24°	24°	24°	25°	25°
D	214	185	185	185	185	228	207	207
E	900	1082	1082	1082	1082	1082	1150	1150
F	2499	2657	2657	2657	2657	2657	2754	2754
G	3172	3378	3378	3378	3378	3378	3474	3474
H	26°	30°	30°	30°	30°	30°	30°	30°
I	2157	2205	2319	2205	2319	2177	2367	2447
J	2781	2908	3023	2908	3023	3023	3073	3149
K	587	467	828	467	828	818	544	800
L	40°	42°	42°	42°	42.0°	42°	42°	42°
M	91°	97°	97°	97°	97°	97°	97°	97°
N	1575	1727	1727	1727	1727.0	1727	1880	1880
N	-	1575	1575	1575	-	1575	-	-
N	-	1880	1880	1880	-	1880	-	-
O	1940	2032	2024	2032	2024	2032	2119	2106
P	-	1374	1374	1374	1374	1374	1507	1507
Q	1488	1643	1643	1643	1643	1643	1832	1832
Q'	-	1520	1520	1520	-	1520	-	-

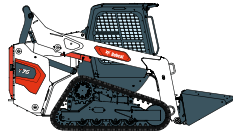




87 MACHINES / 150 ATTACHMENT FAMILIES / 1 TOUGH ANIMAL



**SKID-STEER
LOADERS**



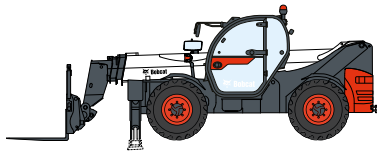
**COMPACT TRACK
LOADERS**



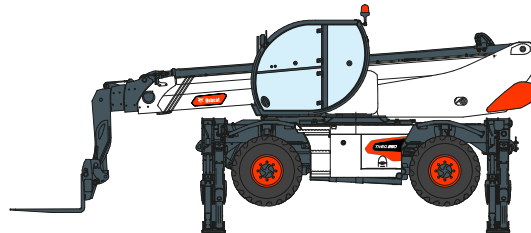
**SMALL ARTICULATED
LOADERS**



**BACKHOE
LOADERS**



TELEHANDLERS



ROTARY TELEHANDLERS



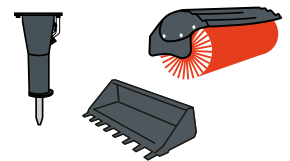
**LIGHT COMPACTION
EQUIPMENT**



**MINI TRACK
LOADER**



COMPACT EXCAVATORS



ATTACHMENTS



Bobcat is a Doosan Company. Doosan is a global leader in construction equipment, power & water solutions, engines, and engineering proudly serving customers and communities for more than a century. | Bobcat and the Bobcat logo are registered trademarks of Bobcat Company in the United States and various other countries. ©2022 Bobcat Company. All Rights Reserved.

www.bobcat.com

©2022 BOBCAT B4501693-EN (01-22)



Bobcat®

*Financing options may vary by product, country and dealer. Always ask your dealer about currently available financing options. Terms and conditions may apply.

Doosan Bobcat EMEA, U Kodelky 1810, 263 12 Dobříš, Czech Republic

