

Performance

Rated capacity	8,000 kg @ 600 mm Load Center
Max. lifting height (stabilisers fully extended)	35 m
Capacity at max. height (stabilisers fully extended)	3200 kg
Turret Rotation	360° (Continuous)
Max. speed	40.0 km/h

Stabilisers

Type	Scissor stabilisers with single telescopic extension
Stabilization system	Ground pressure detection. Automatic levelling. Lifting capacity adjusted in proportion to stabiliser extension

Weights

Weight (unladen)	24000 kg
------------------	----------

Engine

Make / Model	Volvo TAD 583 VE
Compliance	Stage V
Rated power (ISO 14396)	175 kW (238 hp) @ 2,300 rpm
Maximum torque	975 Nm @ 1,380 rpm
Number of cylinders	4.0
Displacement	5130 cm ³

Hydraulic System

Pump type	Load Sensing pump
Pump capacity	160.00 L/min
Relief valve pressure setting	350.00 bar
Control valve (boom and turret)	Electro-proportional with flow sharing

Drive System

Transmission	Hydrostatic with electronic regulation / 4 wheel drive
Main drive	Electronically controlled variable displacement pump. Variable displacement motor. 2-speed gear box

Traction

Standard tyres	445/65 R22,5
Gradeability	61.70 %

Axles and brakes

Axle type	Oil-immersed axles with planetary gears
Rear axle	Oscillating and steering with hydraulic locking
Front axle	Oscillating and steering with levelling +/-8°
Service brake	Hydraulically operated wet multi-disk brakes on each axle
Parking brake	Hydraulic with negative action

Steering

Steering modes	3 steering modes with semi-automatic wheel realignment. 2 wheel steering / 4 wheel steering / Crab-steer
External turning radius (with forks)	7000.0 mm

Fluid Capacities

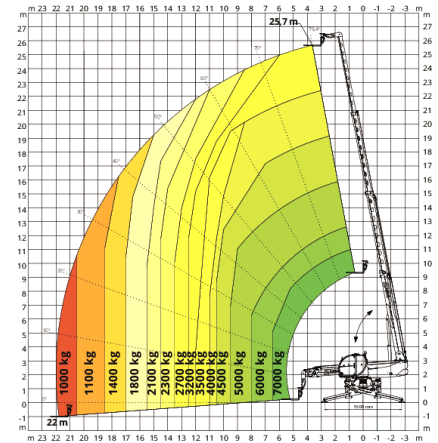
Fuel tank	270.00 L
Adblue	40.00 L
Hydraulic reservoir	240.00 L

Environmental

Level of acoustic power (LWA)	108 dB(A)
-------------------------------	-----------

Standards

Standard compliance	2006/42/EC: EU Machinery Directive 2016/1628: EU Regulation on the emissions of stage V engines EN 1459-X: Relating to standards on the safety requirements for variable reach machines EN 280/EN 280-1/EN 280-2: standards relating to mobile elevating work platforms (if available) ROPS/level 2 FOPS: relating to the standards for protective structures
---------------------	---

Load Chart
360° LOAD CHART
ON FULLY EXTENDED STABILISERS

Dimensions - mm
